

Encore LP 12IP



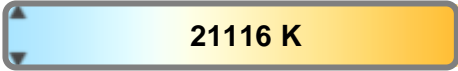
Light Efficiency:



Light Quality:



Color Temperature:



Output: 5125 lm

Peak: 5487 cd

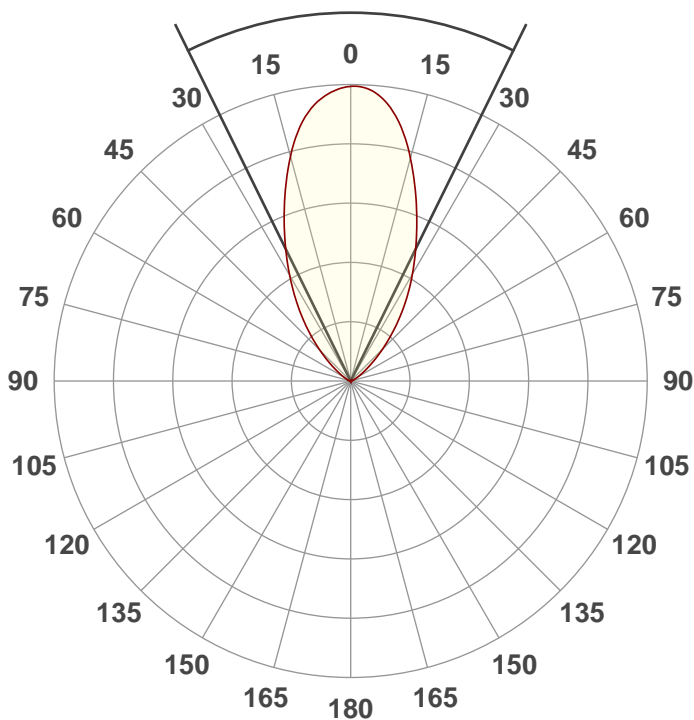
Power: 192 W

PF: 0.99



Beam Angle

52.4°



Test:

60Deg Full On

Date:

8/2/2021

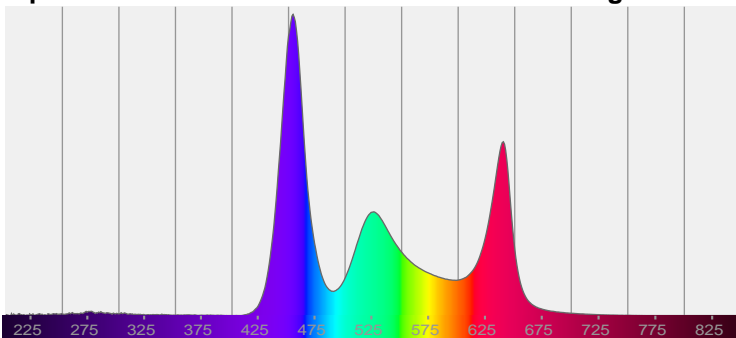
Note:



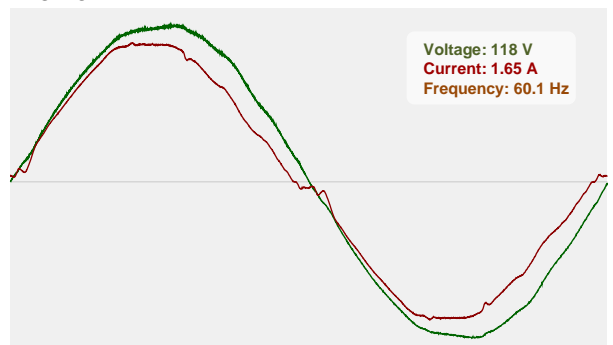
CIE 1931
x: 0.270
y: 0.242

Spectra

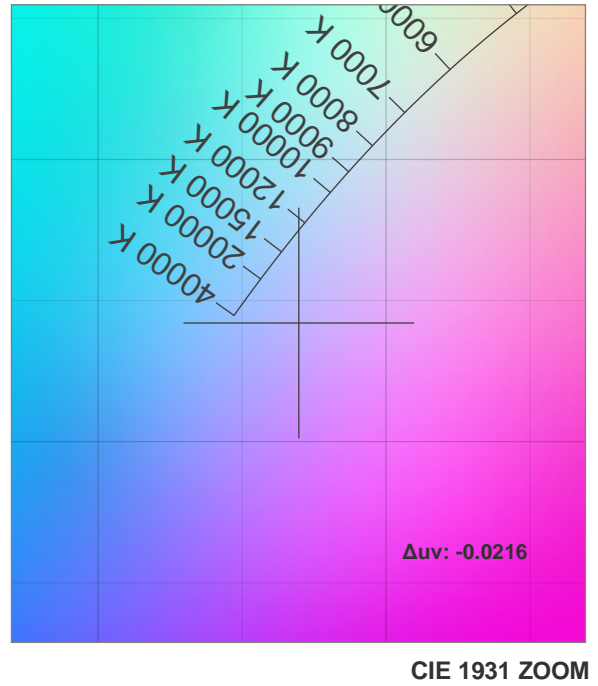
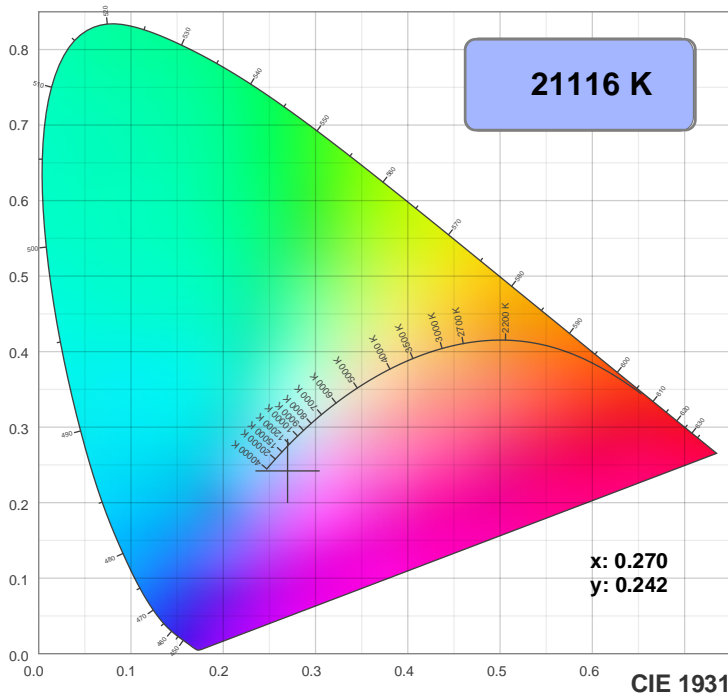
Dominant Wavelength: 448nm



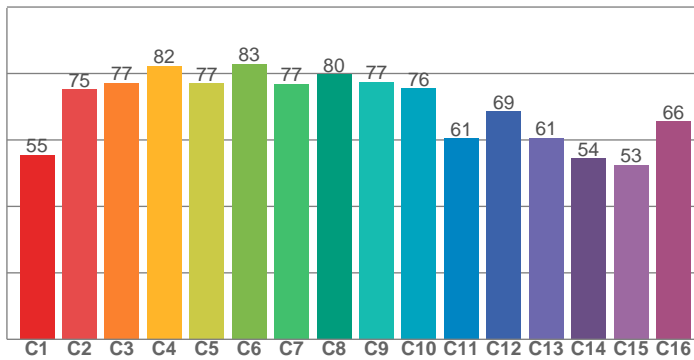
Power



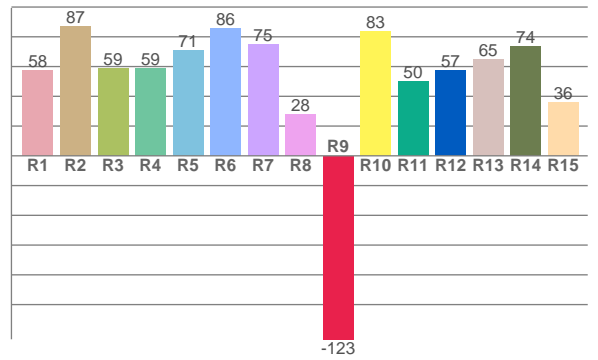
Color Details



TM30: 72.5



CRI: 65.3 (R1-R8)



CRI R values, only R1-R8 are used to calculate final CRI value

R1	R2	R3	R4	R5	R6	R7	R8	R9	R10	R11	R12	R13	R14	R15
57.6	87.2	59.1	58.8	70.8	85.7	75.0	27.9	-123.3	83.5	49.8	57.5	65.0	73.8	35.8

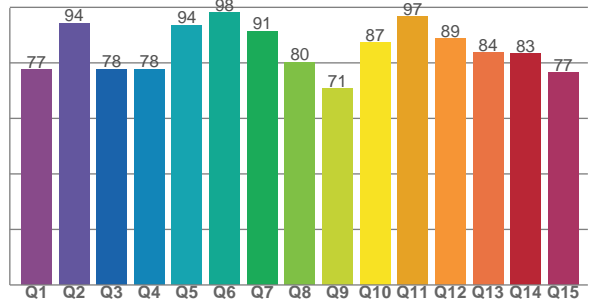
TM30 C values, 16 binned values out of total of 99 C values

C1	C2	C3	C4	C5	C6	C7	C8	C9	C10	C11	C12	C13	C14	C15	C16
55.5	75.1	77.2	82.3	77.1	82.9	76.8	79.6	77.5	75.6	60.5	68.7	60.7	54.4	52.5	65.5

CQS Q values

Q1	Q2	Q3	Q4	Q5	Q6	Q7	Q8	Q9	Q10	Q11	Q12	Q13	Q14	Q15
77.5	94.3	77.8	77.7	93.6	98.0	91.4	80.3	70.6	87.3	96.6	88.8	83.7	83.4	76.6

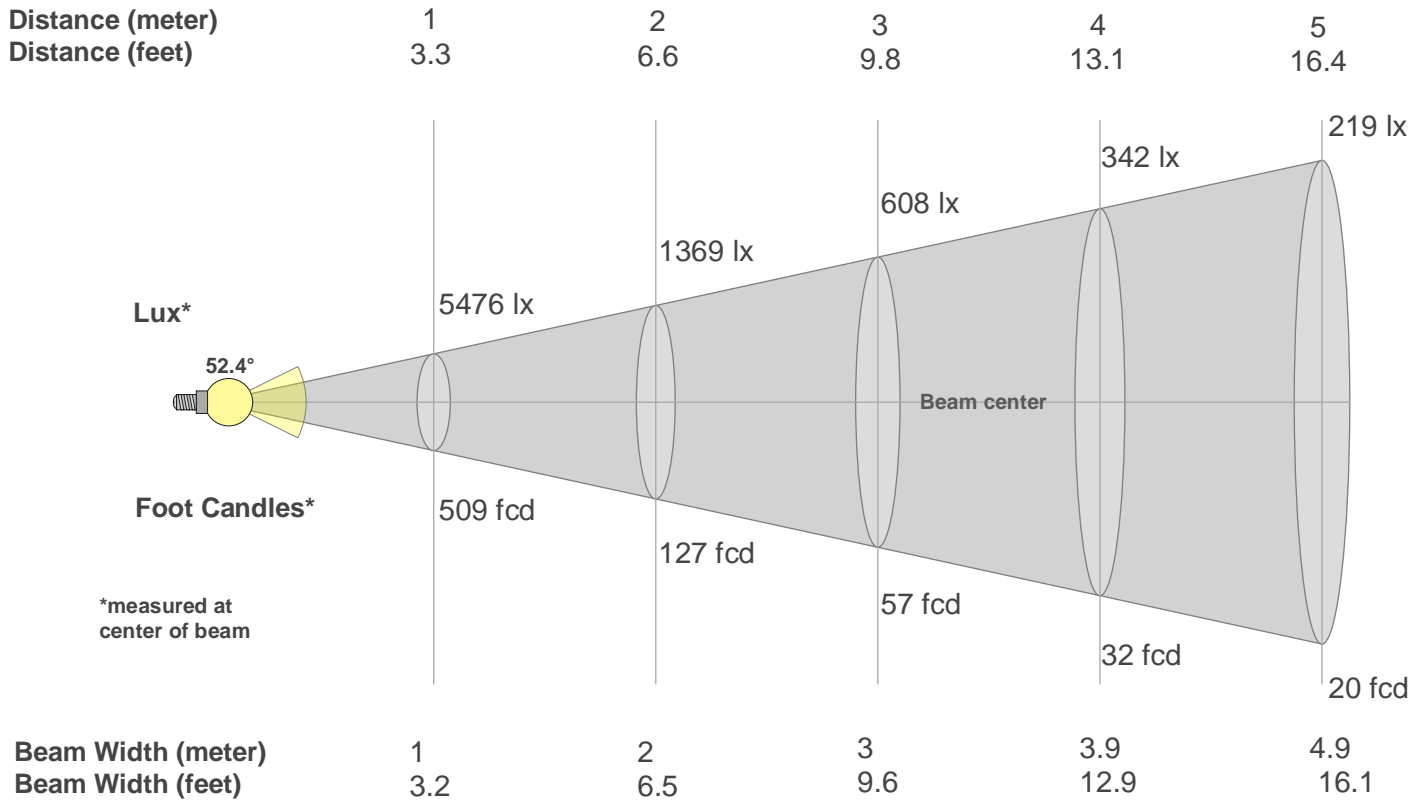
CQS: 83.1



Color Parameters

Color Temperature	Color Rendering Index	Red Component	Color Fidelity	Color Gamut	Color Quality Scale	Color Coordinate CIE 1931	Color Coordinate CIE 1931	Color Coordinate	Color Coordinate	Color Deviation from Black Body
CCT	CRI	CRI R9	TM30 Rf	TM30 Rg	CQS	x	y	u	v	Δuv
21116 K	65.3	-123.3	72.5	115.9	83.1	0.270	0.242	0.201	0.271	-0.0216

Beam Details



Beam Intensities from 1-20m

m	1	2	3	4	5	6	7	8	9	10	11	12	13	14	15	16	17	18	19	20
ft	3.3	6.6	9.8	13.1	16.4	19.7	23	26.2	29.5	32.8	36.1	39.4	42.7	45.9	49.2	52.5	55.8	59.1	62.3	65.6
lx	5476	1369	608	342	219	152	112	86	68	55	45	38	32	28	24	21	19	17	15	14
fcd	508.7	127.2	56.5	31.8	20.3	14.1	10.4	7.9	6.3	5.1	4.2	3.5	3	2.6	2.3	2	1.8	1.6	1.4	1.3

Intensities in 0° C-plane

0°	2°	4°	6°	8°	10°	12°	14°	16°	18°	20°	22°	24°	26°	28°	30°	32°	34°	36°	38°
5476	5448	5380	5275	5143	4962	4731	4473	4183	3889	3596	3309	3034	2768	2517	2276	2044	1826	1618	1417
100%	99%	98%	96%	94%	91%	86%	82%	76%	71%	66%	60%	55%	51%	46%	42%	37%	33%	30%	26%

Intensities in 90° C-plane

0°	2°	4°	6°	8°	10°	12°	14°	16°	18°	20°	22°	24°	26°	28°	30°	32°	34°	36°	38°
5476	5448	5380	5275	5143	4962	4731	4473	4183	3889	3596	3309	3034	2768	2517	2276	2044	1826	1618	1417
100%	99%	98%	96%	94%	91%	86%	82%	76%	71%	66%	60%	55%	51%	46%	42%	37%	33%	30%	26%

Intensities in 180° C-plane

0°	2°	4°	6°	8°	10°	12°	14°	16°	18°	20°	22°	24°	26°	28°	30°	32°	34°	36°	38°
5476	5474	5420	5309	5162	4960	4714	4444	4148	3856	3567	3287	3022	2767	2527	2301	2082	1868	1660	1457
100%	100%	99%	97%	94%	91%	86%	81%	76%	70%	65%	60%	55%	51%	46%	42%	38%	34%	30%	27%

Intensities in 270° C-plane

0°	2°	4°	6°	8°	10°	12°	14°	16°	18°	20°	22°	24°	26°	28°	30°	32°	34°	36°	38°
5476	5474	5420	5309	5162	4960	4714	4444	4148	3856	3567	3287	3022	2767	2527	2301	2082	1868	1660	1457
100%	100%	99%	97%	94%	91%	86%	81%	76%	70%	65%	60%	55%	51%	46%	42%	38%	34%	30%	27%

Beam Angle 50%	Field Angle 10%	Cutoff Angle 2,5%	Intensity Ratio in 120° Cone	Intensity Ratio in 90° Cone
52.4°	98.3°	122.3°	97.9%	87.7%